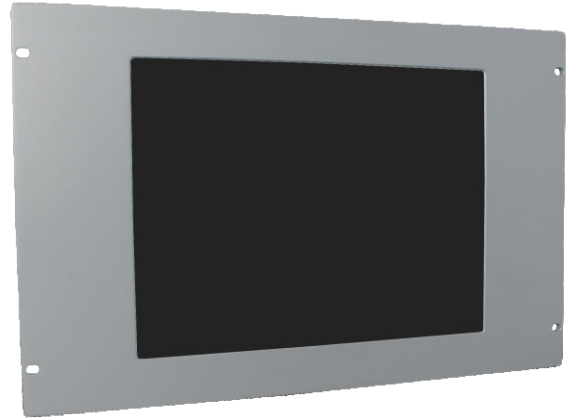


## Features

- Aluminum front panel IP65
- Rear Side OSD
- VGA / DVI Input
- 9~36V wide range power input



| I/O Port                      |                                | Power                 |                                    |
|-------------------------------|--------------------------------|-----------------------|------------------------------------|
| VGA                           | 1                              | Power Input           | 9~36V DC                           |
| DVI                           | 1                              | Power Consumption     | Max 30 W                           |
| Touch Screen                  | USB                            | Mechanical            |                                    |
| Others                        | -                              | Construction          | Al. Front Panel, Black steel cover |
| OSD Control                   | 5 keys at rear                 | IP rating             | IP65 Front Panel                   |
| Power                         | 3 pin Terminal Block Connector | Mounting              | Panel Mounting                     |
| Display                       |                                | Dimension (mm)        | 482 x 310 x 63                     |
| Display type                  | TFT 15" LED 4:3                | Net weight (Kg)       | 5                                  |
| Max. resolution               | 1024 x 768 XGA                 | Environment           |                                    |
| Max. color                    | 16,2 M                         | Operating Temperature | 0~50°C                             |
| Luminance(cd/m <sup>2</sup> ) | 500                            | Storage Temperature   | -20~60°C                           |
| View angle(H°/V°)             | 85/85/85/85° LRUD              | Certification         | CE/FCC class A                     |
| Contrast                      | 1500:1                         | Ordering Information  |                                    |
| Touch Screen                  |                                | HS-4500               | LCD 015 RACK no Touch              |
| Type                          | Resistive Touch optional       | HS-4501               | LCD 015 RACK Touch Screen          |
| Interface                     | USB                            |                       |                                    |

